


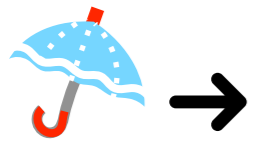
				
	↓		↓			↓				
	→	F	A	R	F	A	L	L	A	
		O			I				L	
		G			O		M		B	
		L			R		E		E	
		I			E		L		R	
		A							R	
				→	C	A	R	O	T	A
										P
										E
										R

A crossword puzzle grid with the following words and icons:

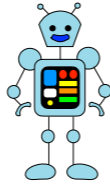
- Across:**
 - NUVOLA (with a musical note icon above and a cloud icon to the left)
 - TARTARUGA (with a turtle icon to the left)
 - FUNGO (with a mushroom icon to the left)
- Down:**
 - OT (with a musical note icon above)
 - PA (with a palm tree icon above)
 - RA (with a spider icon above)
 - LA (with a brick wall icon to the left)
 - A (with a brick wall icon to the left)

The grid structure is as follows:

N	U	V	O	L	A														
O																			R
T									P										A
A		T	A	R	T	A	R	U	G	A									
									L										N
	F	U	N	G	O				M	U	R	O							
									A										



O M B R E L L O



P

O

L

L



O R O L O G I O

O

N

T

A

G

N

A

O

B

O

T

R

I

M

O

N

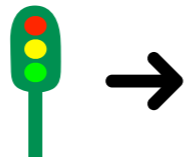
L

O

G

I

O



S E M A F O R O



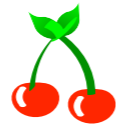
F



T



C



C

L U C C H E T T O



I

I



I

R

L

A

M

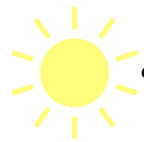
M

I

V

O

I



S O L E

E

N



C A S A

homemademamma.com

G

E

A

I



G E L A T O



									L	
C	O	C	C	I	N	E	L	L	A	
A					I	homemademamma.com			M	
N	A	V	E		D				P	
D		I		G	O	C	C	I	A	
E		T							D	
L		E							I	
A				C	E	S	T	I	N	O
									A	

