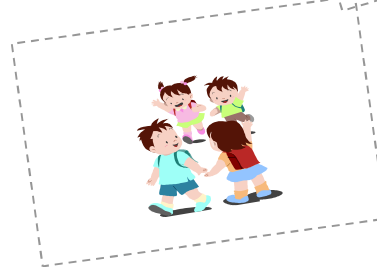
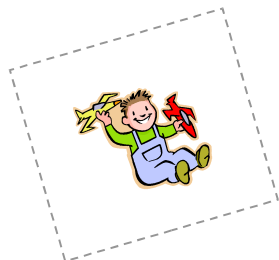
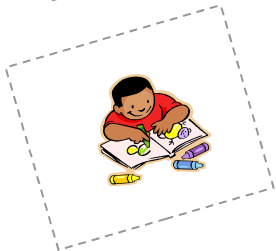
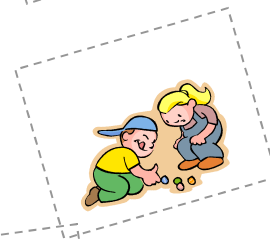
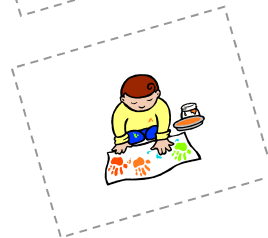
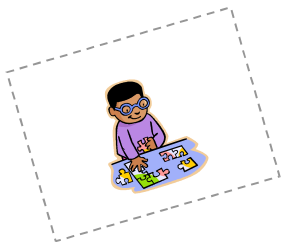
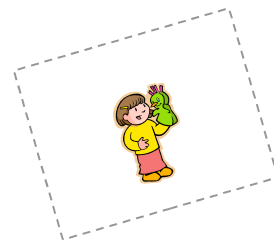
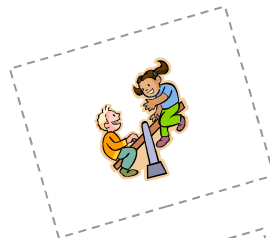
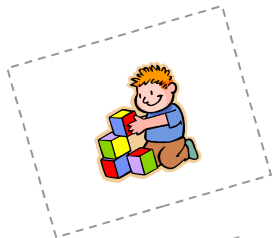
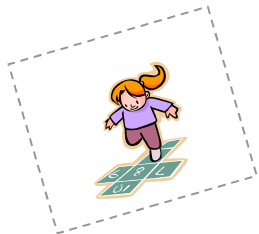


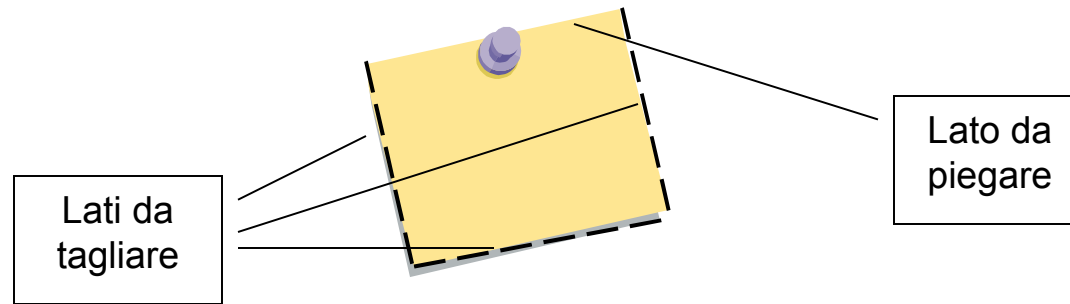


Si torna a scuola!



Come si costruisce il calendario conto alla rovescia

1. Stampare i 2 fogli del calendario
2. Ritagliare 3 dei 4 lati dei rettangoli (post-it) che si trovano sul primo foglio in modo da creare tante finestrelle



3. Ripiegare leggermente le finestrelle dal lato non tagliato
4. Incollare il primo foglio sul secondo, facendo attenzione a farli coincidere perfettamente e a non incollare le parti contenute nei rettangoli tratteggiati

